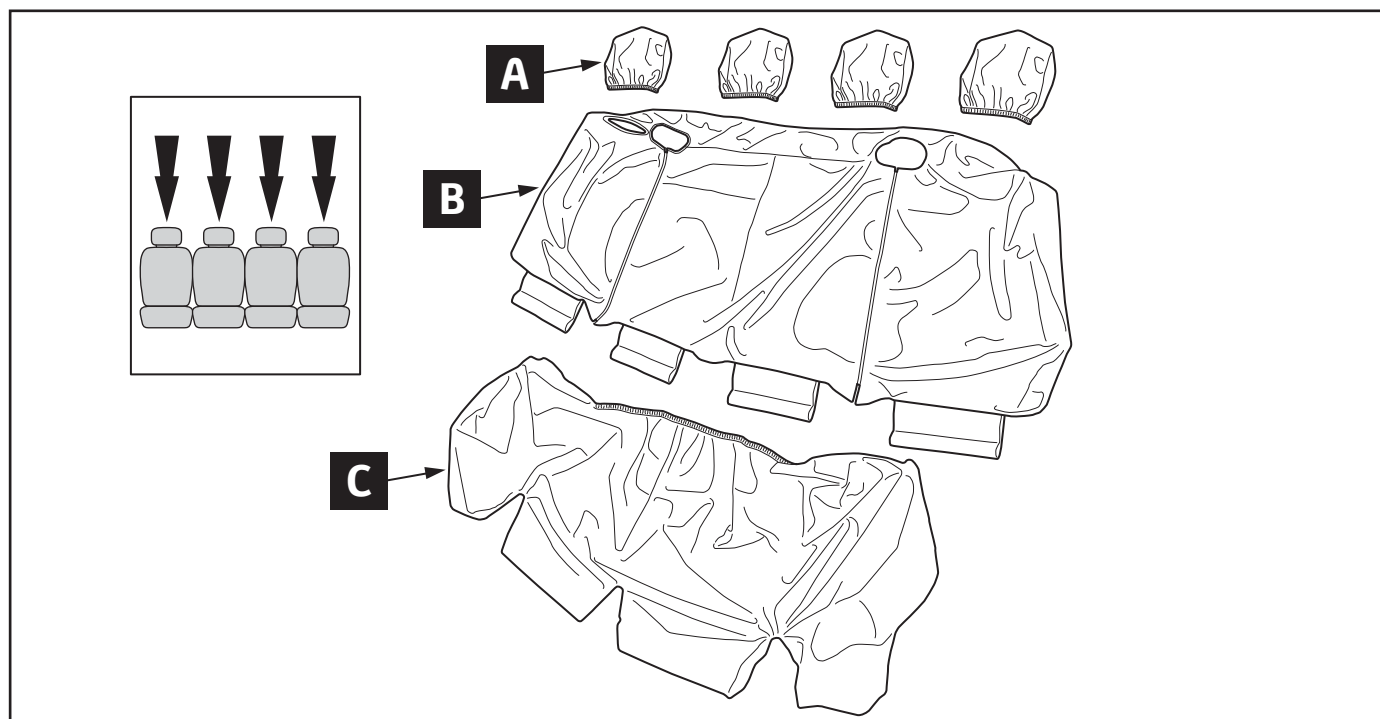
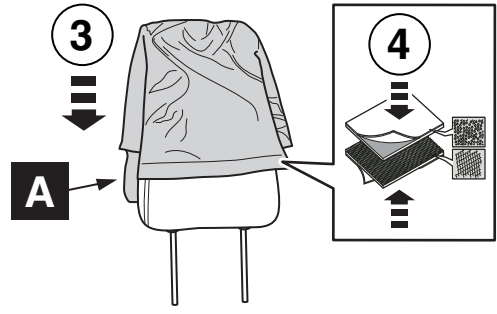
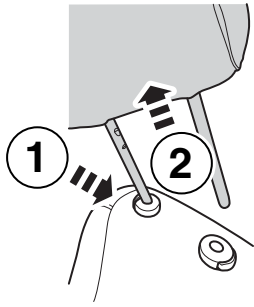
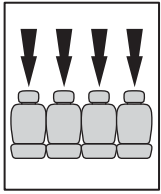
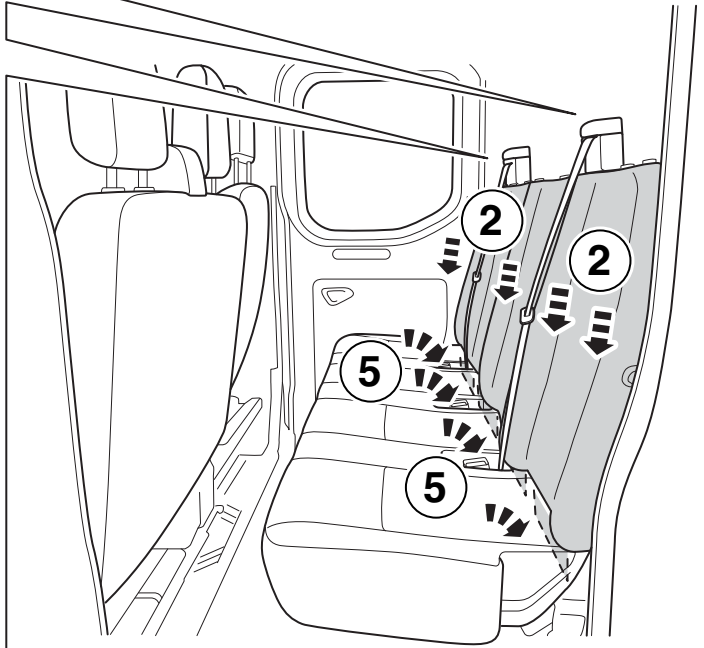
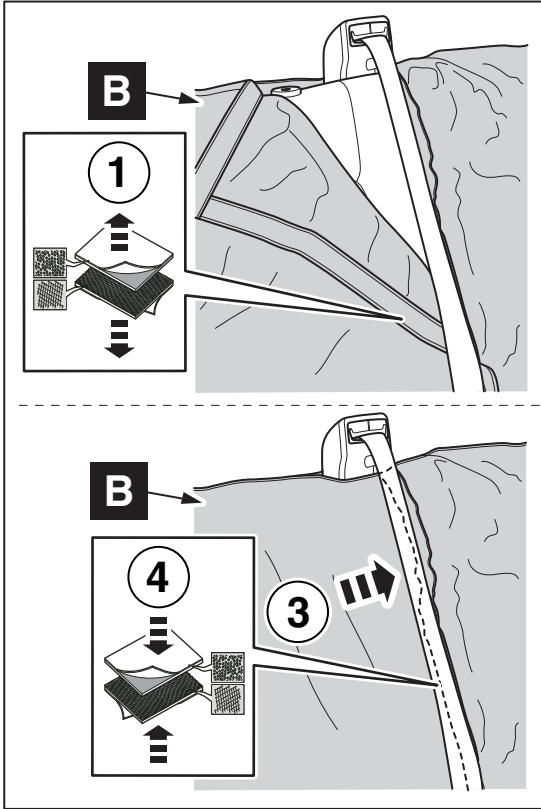


- (GB)** INSTALLATION INSTRUCTION
PROTECTIVE SEAT COVER
- (D)** EINBAUANLEITUNG
SCHUTZSITZABDECKUNG
- (E)** INSTRUCCIONES DE MONTAJE
CUBIERTA DE ASIENTO PROTECTORA
- (F)** INSTRUCTIONS DE MONTAGE
HOUSSE DE PROTECTION
- (I)** ISTRUZIONI DI MONTAGGIO
COPRISIDILE PROTETTIVO
- (P)** INSTRUÇÕES DE MONTAGEM
TAMPA DO ASSENTO DE PROTEÇÃO
- (NL)** INBOUW-INSTRUCTIE
BESCHERMEDE STOELBEKLEDING
- (DK)** MONTERINGSVEJLEDNING
BESKYTTENDE SÆDEBETRÆK
- (N)** MONTERINGSVEILEDNING
BESKYTTENDE SETETREKK
- (S)** MONTERINGSANVISNING
SKYDDSSÅKERT SKYDD
- (SF)** ASENNUSOHJE
SUOJAKUORI
- (CZ)** NÁVOD K MONTÁŽI
OCHRANNÝ KRYT SEDADLA
- (H)** BESZERELÉSI UTASÍTÁS
VÉDŐ ÜLÉSHUZAT
- (PL)** INSTRUKCJA ZABUDOWY
OCHRONNA OSŁONA SIEDZENIA
- (GR)** Οδηγίες τοποθέτησης
ΠΡΟΣΤΑΤΕΥΤΙΚΟ ΚΑΛΥΜΜΑ ΚΑΘΙΣΜΑΤΟΣ
- (TR)** MONTAJ TALIMATI
KORUYUCU KOLTUK ÖRTÜSÜ
- (RUS)** инструкция по установке
ЗАЩИТНАЯ ЧЕХОЛ ДЛЯ СИДЕНЬЯ
- (RO)** INSTRUCTIUNI DE MONTAJ
CAPAC DE PROTECTIE PENTRU SCAUN

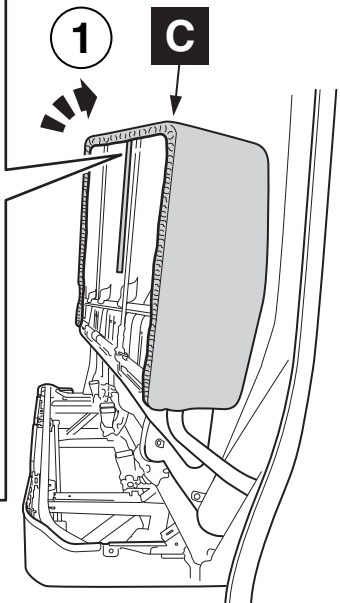
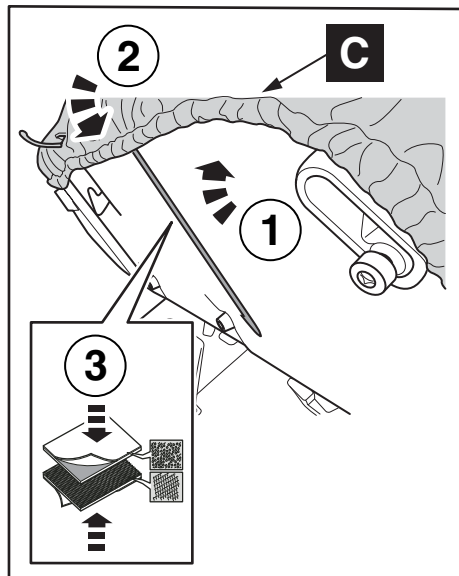
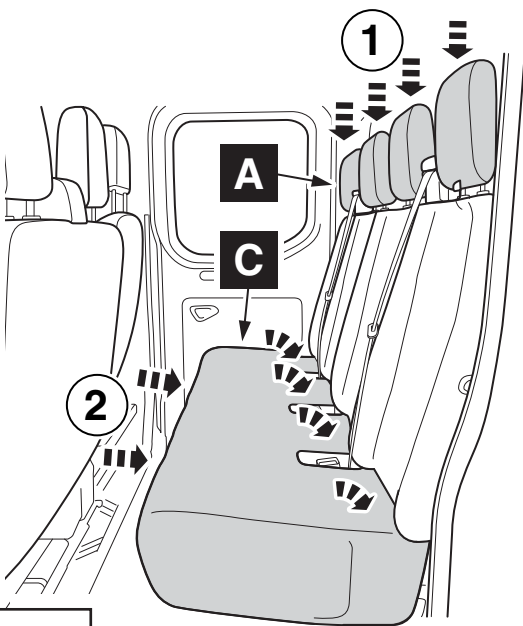




1



2



3

4