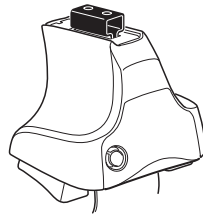
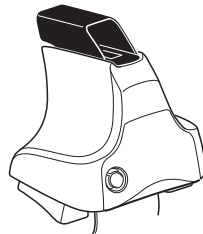
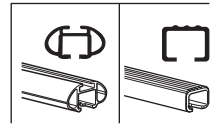


Kit 1665

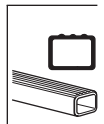
- FORD Ranger, 4-dr Double Cab, 11-
- FORD Ranger, 4-dr Super Cab, 11-
- FORD Ranger, 2-dr Single Cab, 11-
- MAZDA BT-50, 4-dr Double Cab, 12-
- MAZDA BT-50, 2-dr Single Cab, 12-



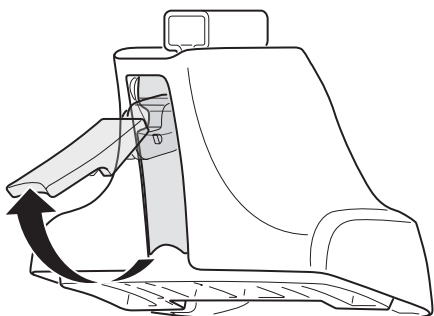
754 Rapid System
480R Rapid Traverse (North America)



480 Traverse (North America)



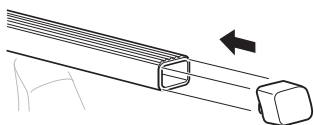
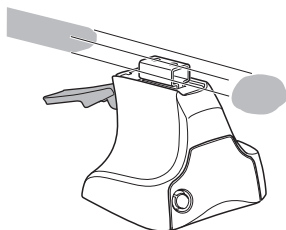
1



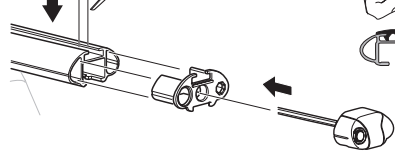
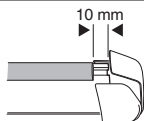
2



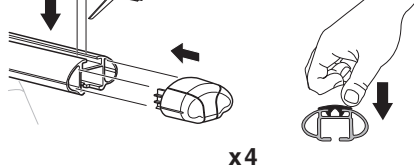
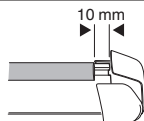
754 Rapid System
480R Rapid Traverse
(North America)



x4



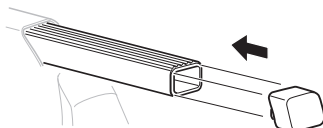
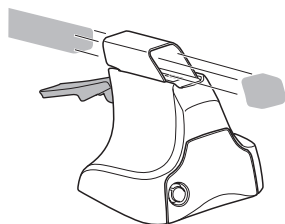
x4



x4

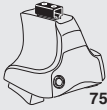


480 Traverse
(North America)

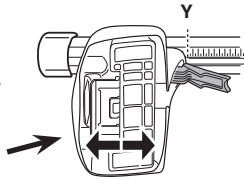
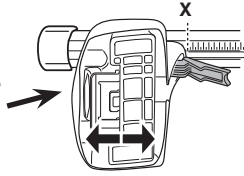


x4

3



754 Rapid System



	X
FORD Ranger , 4-dr Double Cab, 11-	45,5
FORD Ranger , 4-dr Super Cab, 11-	45,5
FORD Ranger , 2-dr Single Cab, 11-	45,5
MAZDA BT-50 , 4-dr Double Cab, 12-	46,5
MAZDA BT-50 , 2-dr Single Cab, 12-	46,5

	Y
FORD Ranger , 4-dr Double Cab, 11-	44
FORD Ranger , 4-dr Super Cab, 11-	46
FORD Ranger , 2-dr Single Cab, 11-	-
MAZDA BT-50 , 4-dr Double Cab, 12-	44
MAZDA BT-50 , 2-dr Single Cab, 12-	-

3



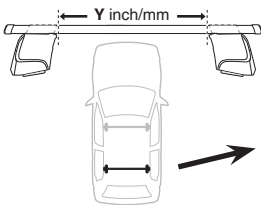
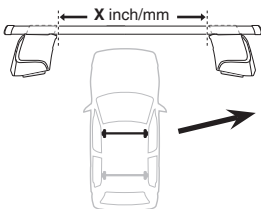
480R Rapid Traverse



480 Traverse



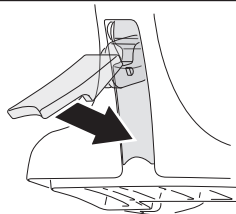
(North America)



	X inch	X mm
FORD Ranger , 4-dr Double Cab, 11-	43 1/2"	1106 mm
FORD Ranger , 4-dr Super Cab, 11-	43 1/2"	1106 mm
FORD Ranger , 2-dr Single Cab, 11-	43 1/2"	1106 mm
MAZDA BT-50 , 4-dr Double Cab, 12-	43 7/8"	1116 mm
MAZDA BT-50 , 2-dr Single Cab, 12-	43 7/8"	1116 mm

	Y inch	Y mm
FORD Ranger , 4-dr Double Cab, 11-	43"	1091 mm
FORD Ranger , 4-dr Super Cab, 11-	43 3/4"	1111 mm
FORD Ranger , 2-dr Single Cab, 11-	-	-
MAZDA BT-50 , 4-dr Double Cab, 12-	43"	1091 mm
MAZDA BT-50 , 2-dr Single Cab, 12-	-	-

4

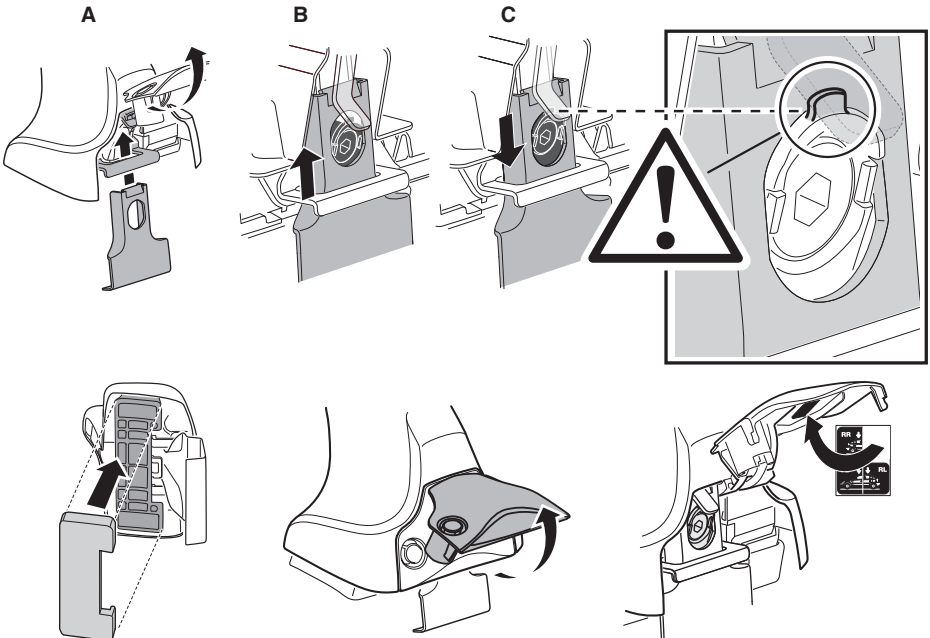


5

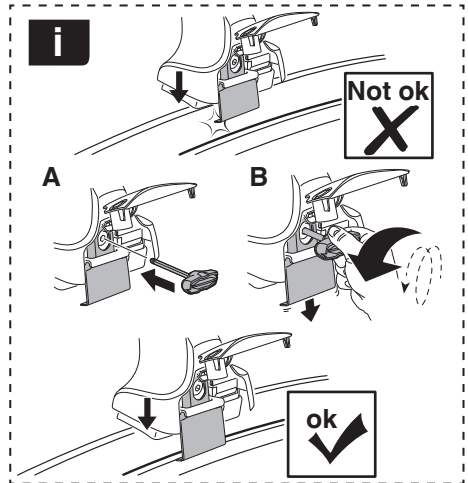
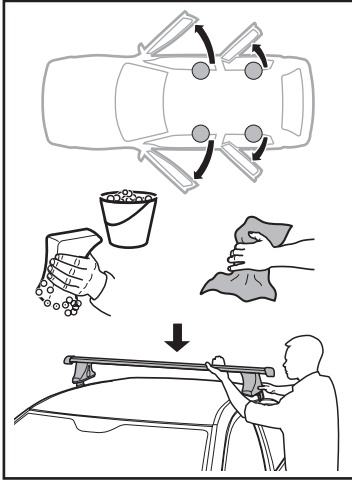
4-dr Double Cab
4-dr Super Cab



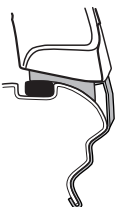
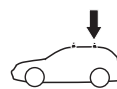
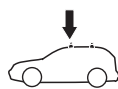
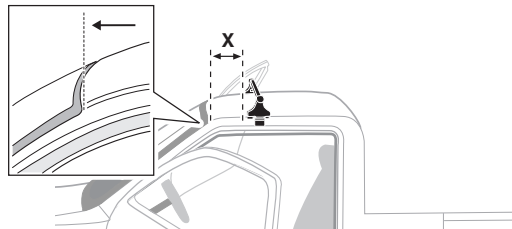
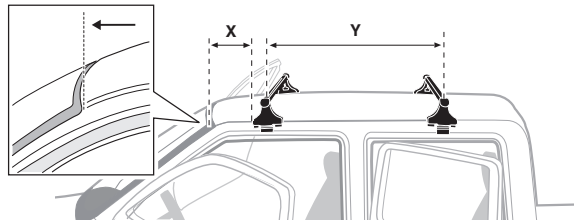
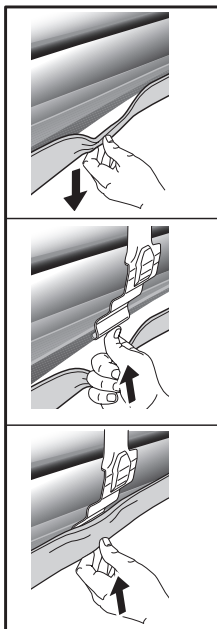
2-dr Single Cab



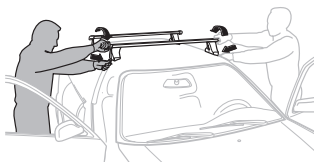
6



	X mm	Y mm	X inch	Y inch
FORD Ranger , 4-dr Double Cab, 11-	235 mm	700 mm	9 1/4"	27 1/2"
FORD Ranger , 4-dr Super Cab, 11-	235 mm	600 mm	9 1/4"	23 5/8"
FORD Ranger , 2-dr Single Cab, 11-	235 mm	-	9 1/4"	-
MAZDA BT-50 , 4-dr Double Cab, 12-	235 mm	700 mm	9 1/4"	27 1/2"
MAZDA BT-50 , 2-dr Single Cab, 12-	235 mm	-	9 1/4"	-



7



GB/US Tighten alternately
 D Die Schrauben abwechselnd anziehen
 F Serrer alternativement chaque côté
 NL Afwisselend aan de linker- en de rechterkant aandraaien
 I Alternare il serraggio delle viti
 E Apertar alternativamente
 PT Aperte alternadamente
 S Dra åt växelvis
 FIN Kierrä vuorotellen
 EST Pinguldage vaheldumisi
 LAT Pieļieciet pamišus
 LIT Užsukinėkite pakaitomis
 PL Śruby dokręcaj naprzemiennie
 RU Затягивайте попеременно

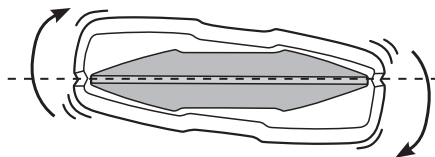
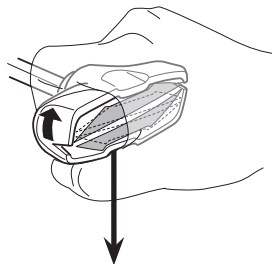
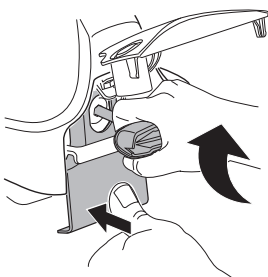
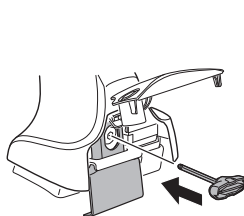
CZ Pokręťta bagażnika dokręcaj dokręcaj naprzemiennie.
 SK Dofahajte striedavo
 SLO Privijajte izmenično.
 HR Naizmjerno zategnite
 HU Egymástól függetlenül szorítandó
 GR Σφιγγείτε εναλλάξ
 TR Dönüşümlü sıkın

中文 交替拧紧

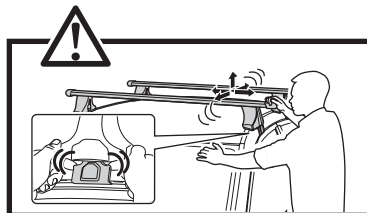
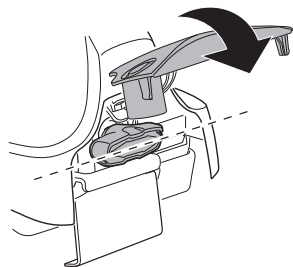
한국어 번갈아 가며 조이십시오.

日本語 交互に締め付けてください。

ไทย ชันในแบบสลับ



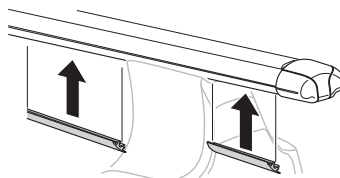
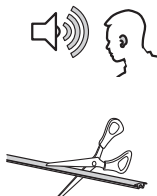
≈ 3 Nm

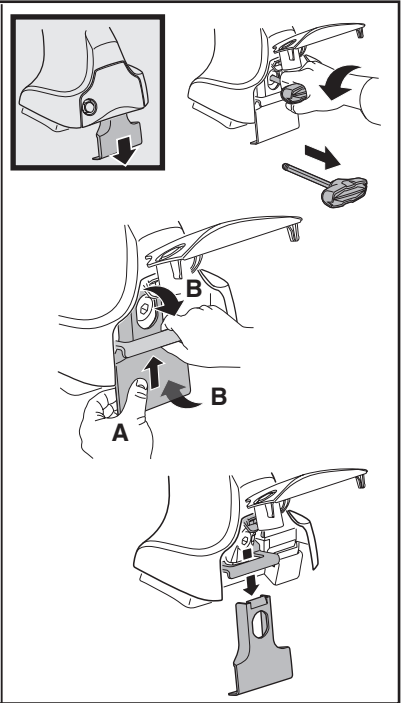
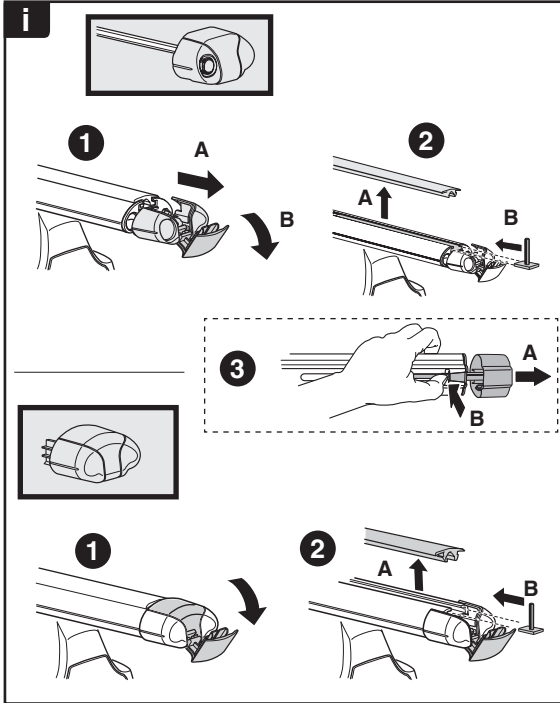
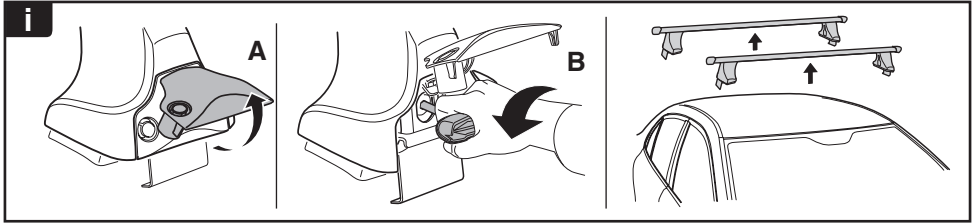


8



x1
17 mm





THULE
SWEDEN
**ONE
KEY
SYSTEM**



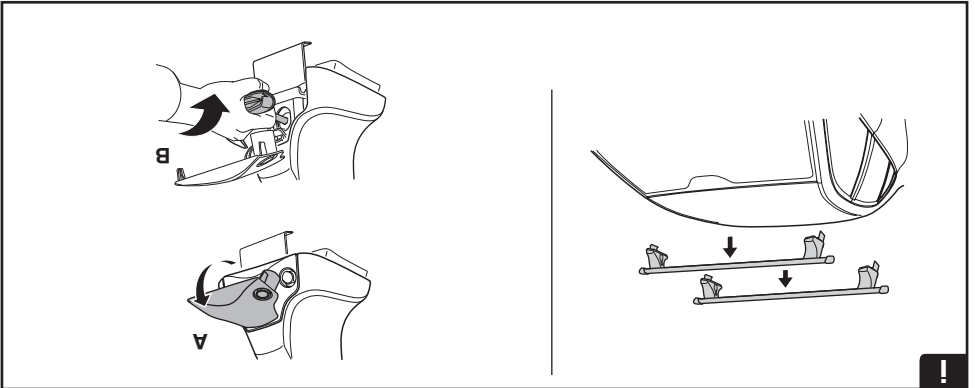
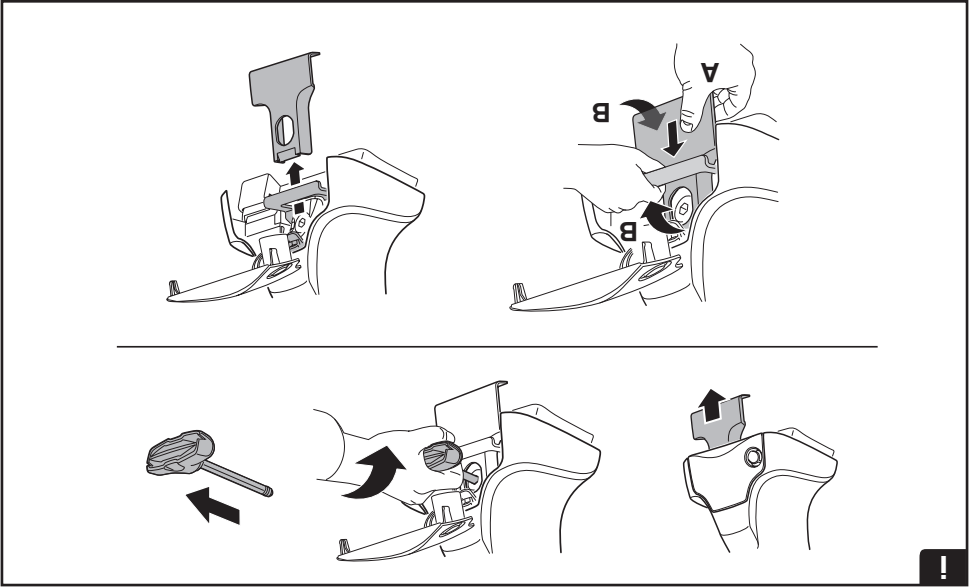
		(x4)
		(x6)
		(x8)
NA		(x10)
EUR		(x12)
ASIA		

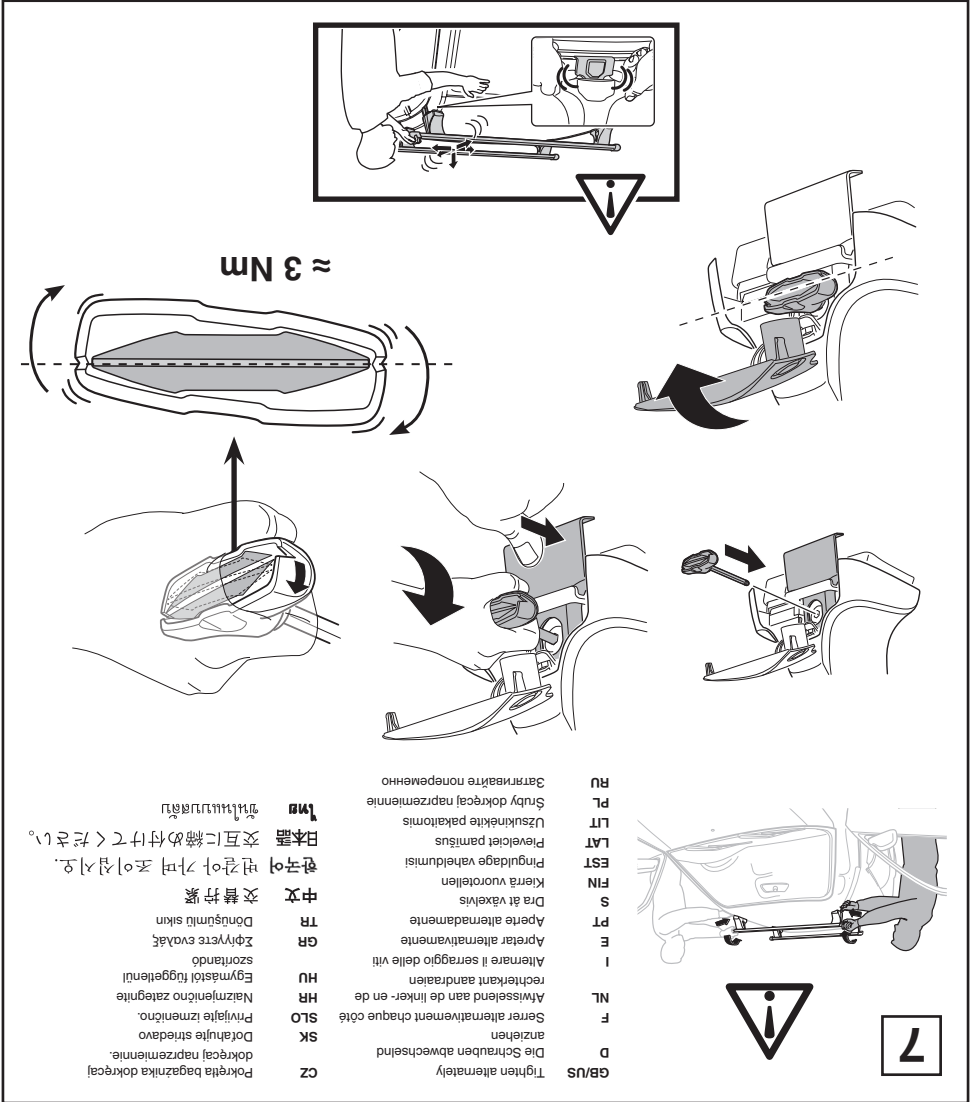
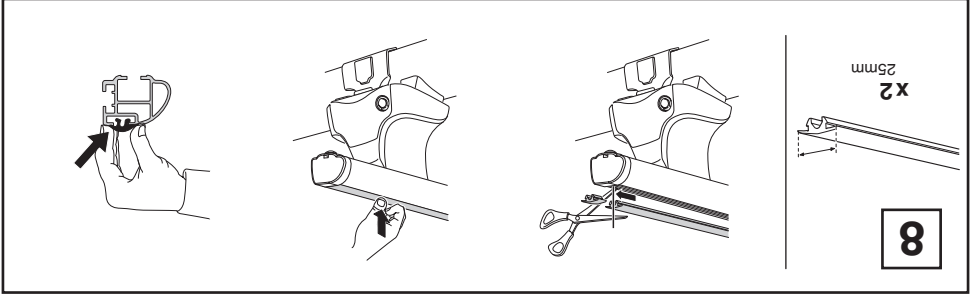


WW ▶ Thule Sweden AB, Box 69, 330 33 Hillerstorp, SWEDEN
NA ▶ Thule Inc., 42 Silvermine Road, Seymour, Connecticut 06483, USA

info@thule.com
customer.service@thule.com

www.thule.com





CZ Pokrétla bagazníka dokrecaj dokrecaj naprazmeniemie.

SK Dotiahnuť striedavo Priviaľte izmenično.

SLO Priviaľte izmenično. Nájzmenično zategnite.

HU Egymástól függetlenül szorítandó.

GR Zφίηστε εναλλάξ Δόνουστμλι σίκιν.

TR Dönüştürmlü sıkın.

中文 交替拧紧

한국어 번갈아가며 조이십시오.

日本語 交互に締め付けてください。

ไทย ไขน็อตสลับกัน

GB/US Tighten alternately Die Schrauben abwechselnd anziehen

D Die Schrauben abwechselnd anziehen

NL Afwisselend aan de linker- en de rechterkant aandraaien

I Alternare il serraggio delle viti rechterkant aandraaien

E Apretar alternativamente

PT Apretar alternadamente

S Dra åt växelvis

FIN Kierrä vuorotellen

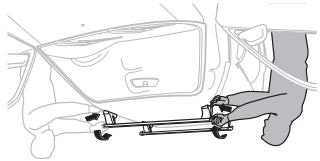
EST Pinguldage vaheldumisi

LAT Pveiclot pantibus

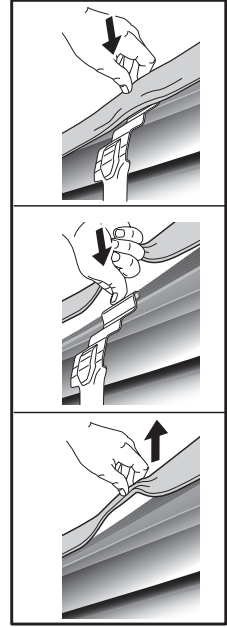
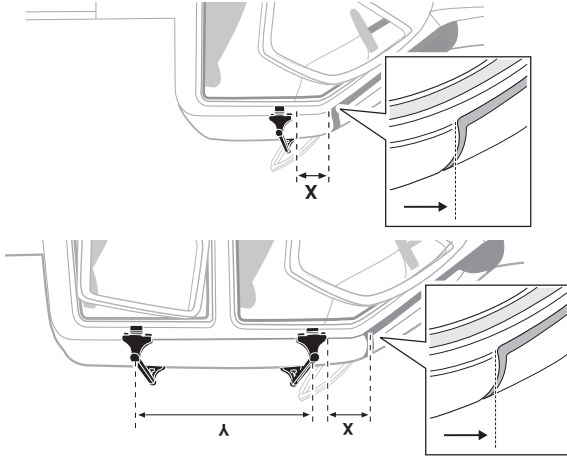
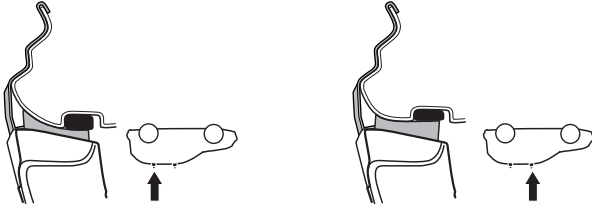
LIT Užsukinkite pakalomis

PL Śrubę dokrecaj naprzemiennie

RU Затягивайте попеременно

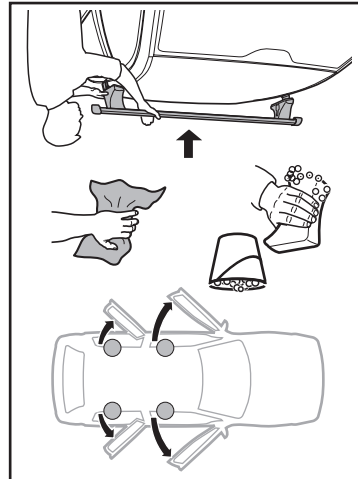
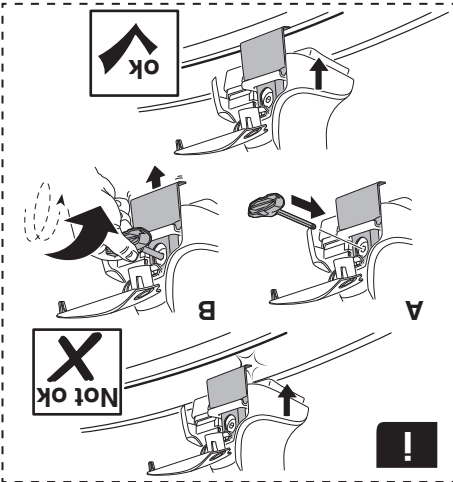


7

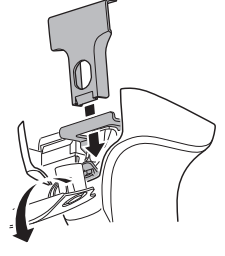
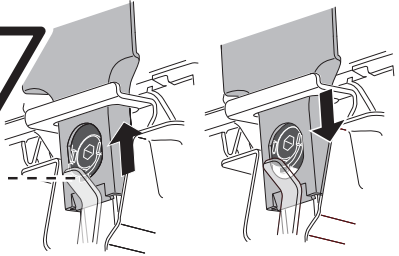
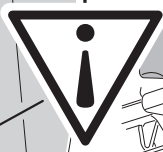
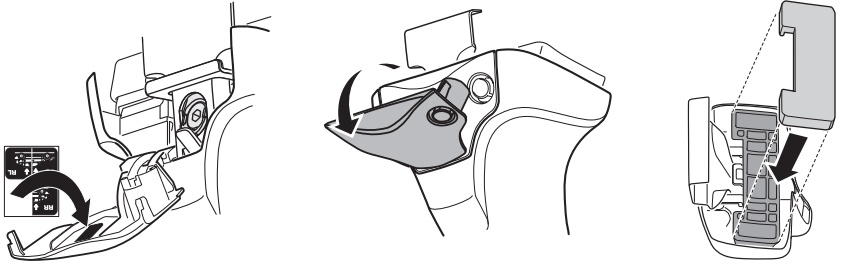


-	9 1/4"	-	235 mm	MAZDA BT-50, 2-dr Single Cab, 12-
27 1/2"	9 1/4"	700 mm	235 mm	MAZDA BT-50, 4-dr Double Cab, 12-
-	9 1/4"	-	235 mm	FORD Ranger, 2-dr Single Cab, 11-
23 5/8"	9 1/4"	600 mm	235 mm	FORD Ranger, 4-dr Super Cab, 11-
27 1/2"	9 1/4"	700 mm	235 mm	FORD Ranger, 4-dr Double Cab, 11-

X mm Y mm X inch Y inch



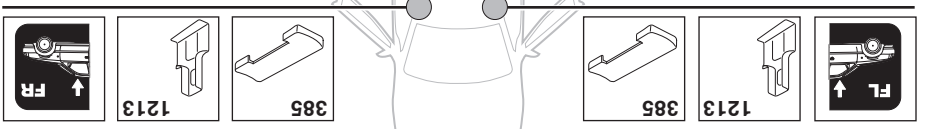
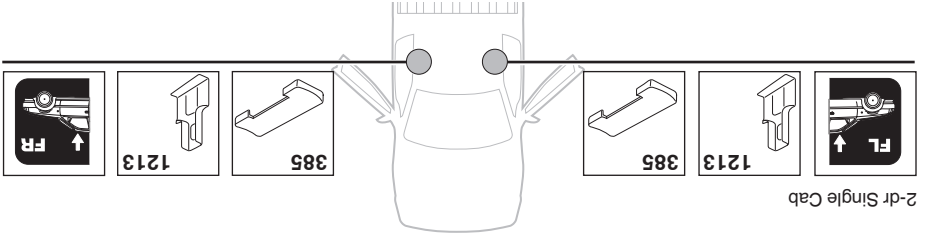
6

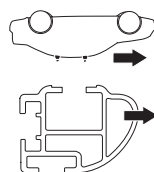
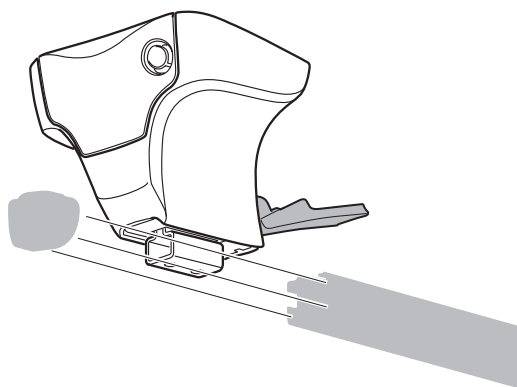
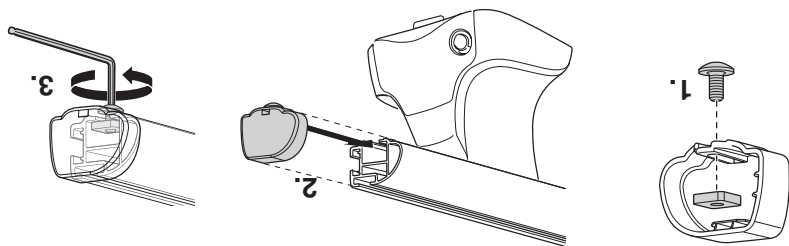


C

B

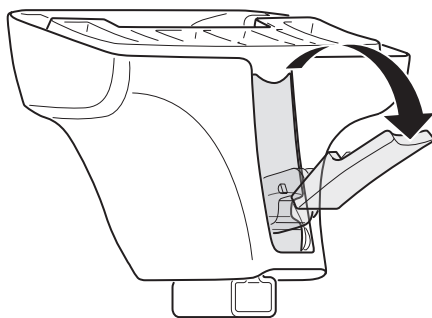
A



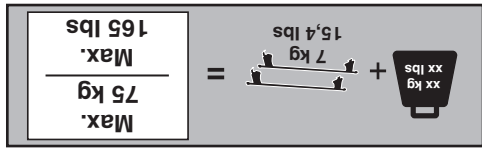
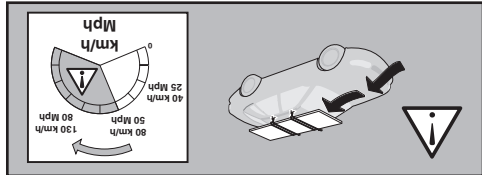
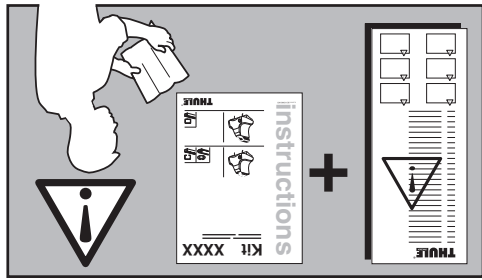
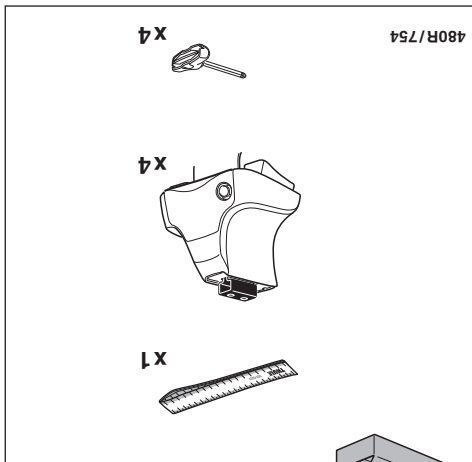
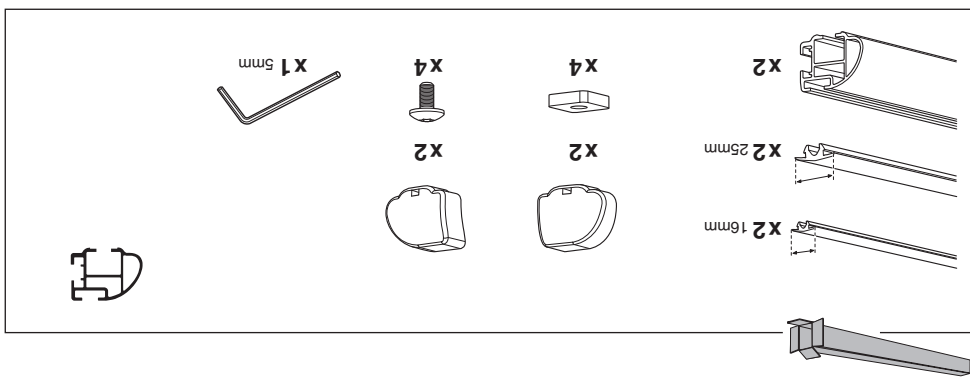
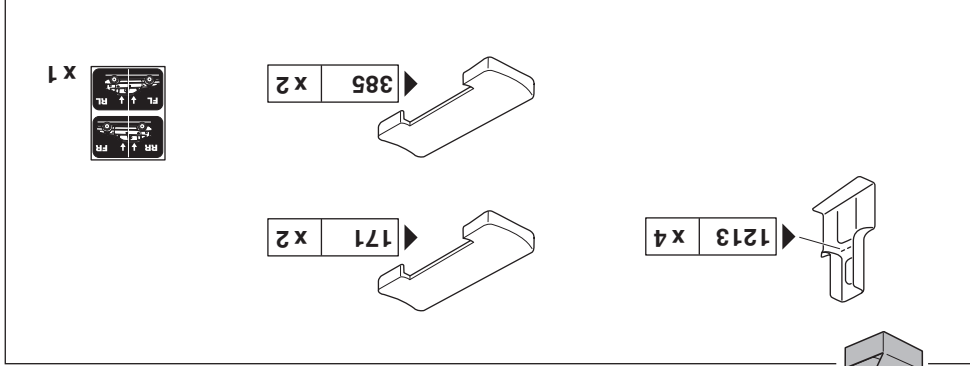


- x2 [Component]
- x2 [Component]
- x4 [Component]
- x4 [Component]
- x4 [Component]
- x1 5mm [Hex key]

2



1

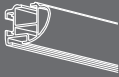
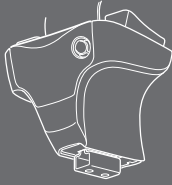


instructions

Kit 1665

- FORD Ranger, 4-dr Double Cab, 11-
- FORD Ranger, 4-dr Super Cab, 11-
- FORD Ranger, 2-dr Single Cab, 11-
- MAZDA BT-50, 4-dr Double Cab, 12-
- MAZDA BT-50, 2-dr Single Cab, 12-

480R
754



ISO 11154-E

THULE
SWEDEN

PROFESSIONAL